

Bangkok

3 Days (CX)





- Rabbit Card
(Supported by Tourism
Authority of Thailand,
first-come-first-served basis)

Short Haul

Special rate on travel insurance
starting from **HKD60** per person
(max. 7 days), please check with our
Travel Advisors for more details

Bangkok Hyatt Place Sukhumvit

3 / 4 Days \$2,440+

Valid for departure: Till 31 Oct 2018

平住曼谷新酒



Hyatt Place Bangkok Sukhumvit



Website: bangkoksukhumvit.place.hyatt.com/en/hotel/home.html

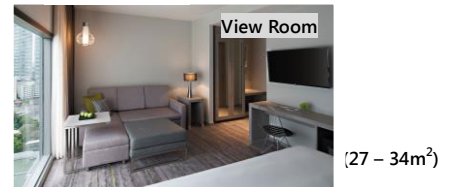
高級酒店品牌(Hyatt)旗下的新中價精品酒店，毗鄰購物地段。酒店設施齊全，天台設有酒吧、戶外泳池、健身房及瑜珈房。

Sukhumvit BTS Phrom Phong BTS Station

	Standard	View Room	Specialty King Room
3 日 2 晚	佔半房 2,440	佔半房 2,520	佔半房 / 加床(梳化床) 2,720 / 2,490
4 日 3 晚	佔半房 2,790	佔半房 2,870	佔半房 / 加床(梳化床) 3,230 / 2,830

延長續住每房每晚:

Standard HK\$ 770
View Room HK\$ 830
Specialty King Room HK\$ 1,020; 加床:HK\$390





- Rabbit Card
(Supported by Tourism
Authority of Thailand,
first-come-first-served basis)

Short Haul



Special rate on travel insurance
starting from **HKD60** per person
(max. 7 days), please check with our
Travel Advisors for more details

Bangkok Hyatt Place Sukhumvit

3 / 4 Days \$2,440+

Valid for departure: Till 31 Oct 2018

Air Fare Surcharge					
Date	Flight Restrictions	Class	Validity	Adult	Child
17SEP18-20SEP18, 23SEP18-28SEP18, 30SEP18-31OCT18	Valid on CX flight only	Q	2-7 days (extended to 14days additional surcharge	NIL	NIL
21SEP18-23SEP18, 28SEP18		N	HKD500 per person)	590	450
29SEP18		N		920	690
Premium Economy Air Fare Surcharge					
17SEP18-31OCT18	Valid on CX flight only	E	2-7 days (extended to 14days additional surcharge HKD500 per person)	1,630	1,230
Business Class Air Fare Surcharge					
07SEP18-31OCT18	Valid on CX flight only	I	2-7 days (extended to 14days additional surcharge HKD500 per person)	3,600	2,700

Price Inclusive of:

- Roundtrip economy class air ticket to Bangkok by Cathay Pacific
- 2 / 3 nights hotel accommodations
- Daily breakfast
- 0.15% TIC Levy

Terms & Conditions:

- Prices quoted are on per person basis and subject to change without prior notice.
- All payments are non-refundable and non-transferable.
- For payment method, please visit <http://www.jebsenholidays.com/en/Payment-Methods>
- Valid for a minimum of 2 adults travel & check-in together under same booking record for the whole journey.
- Reservations must be made at least 3 working days prior to departure.
- Minimum 2-night consecutive stay at same hotel is required
- Travel must be completed on or before 31 Oct 2018
- Surcharge may be applied during peak season.
- No amendment, cancellation and refund once booking is confirmed.
- For booking terms & conditions, please visit <http://www.jebsenholidays.com/en/Booking-Terms-and-Conditions>
- Departure taxes, Hong Kong Airport Security Charge, airlines insurance surcharge, airlines fuel surcharge, seasonal surcharge and travel agency service fee are not included in the above fares.
- These amounts will be determined upon your confirmation of booking and will be added to the final fare.
- Prices and conditions are subject to change without prior notice. Jebsen Holidays reserves final decision in case of any disputes.

Ref: CXBKK108HP / Last Update: 18 Sep 2018