

# Sapporo

## Green Leaf Niseko

### 4 Days (CX)



# Sapporo Green Leaf Niseko 4 Days

## \$8,390<sub>up</sub>

Valid for Staying: 1 Dec 2018 – 30 Mar 2019

<http://www.thegreenleafhotel.com/en/>

THE  
**GREEN LEAF**  
Niseko Village

Short Haul



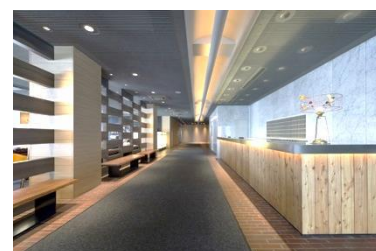
Special rate on travel insurance starting from **HKD60** per person (max. 7 days), please check with our Travel Advisors for more details

### Green Leaf Niseko, Sapporo

Inspired by a fusion of world-class design, local artistry and breathtaking scenery, the 200-room destination hotel provides ski-in ski-out access during winter, tranquil spa and natural onsen facilities and a fantastic variety of bar and dining options featuring local seafood and seasonal Hokkaido produce. Niseko Village is one of Japan's best-kept secrets as an all-season season destination where deep and dry Hokkaido powder blankets the slopes every year; an amazing 18 metres annually.

### Package Inclusive:

- Round trip Economy class ticket to Sapporo by Cathay Pacific
- 3 nights hotel accommodation with daily breakfast
- Complimentary use of indoor and outdoor onsen (including Hilton Niseko Village)
- Complimentary sledding and tubing activities for children and families, inclusive of "Magic Carpets" usage for beginner skiers and snowboarders
- Complimentary scheduled shuttle service between The Green Leaf Niseko Village and Hilton Niseko Village to Hirafu and Kutchan towns



| Room Type                          | Staying Period              | Breakfast | Adult  |                            | Extension Night/Room/Night |                            |
|------------------------------------|-----------------------------|-----------|--|----------------------------|----------------------------|----------------------------|
|                                    |                             |           | Half Twin  | Extra Person<br>(sofa bed) | Twin / Double              | Extra Person<br>(sofa bed) |
| Deluxe Room<br>(23m <sup>2</sup> ) | 1 Dec 2018 –<br>30 Mar 2019 | ✓         | \$8,390  | \$7,650                    | \$2,120                    | \$810                      |
|                                    |                             |           | <b>Hotel surcharge: (per room per night)</b><br>14-16 Dec 2018, 6-10,14-17,20-24,27-31Jan, 17-21,24-28Feb,<br>1-9,16,23Mar2019: \$670<br>17-21Dec2018, 3-5,11,13,18-19,25-26Jan, 1-4,10-16,22-23Feb2019:<br>\$1,180<br>22-24Dec2018, 2,12Jan,5-7Feb2019: \$2,100<br>25-29Dec2018, 8-9Feb2019: \$2,510<br>30Dec2018-1Jan2019: \$3,130 |                            |                            |                            |
| Suite<br>(46m <sup>2</sup> )       | 1 Dec 2018 –<br>30 Mar 2019 | ✓         | \$11,490   | \$7,650                    | \$4,180                    | \$810                      |
|                                    |                             |           | <b>Hotel surcharge: (per room per night)</b><br>14-16 Dec 2018, 6-10,14-17,20-24,27-31Jan, 17-21,24-28Feb,<br>1-9,16,23Mar2019: \$900<br>17-21Dec2018, 3-5,11,13,18-19,25-26Jan, 1-4,10-16,22-23Feb2019:<br>\$1,650<br>22-24Dec2018, 2,12Jan,5-7Feb2019: \$2,520<br>25-29Dec2018, 8-9Feb2019: \$3,760<br>30Dec2018-1Jan2019: \$5,750 |                            |                            |                            |



**Air Fare Surcharge for High Season**

| Date  | Applicable Flights                | Class | Validity  | Adult  | Child  |
|---|-----------------------------------|-------|---|--------|--------|
| <b>Ticket must be issued on or before 31 Dec 2018</b>   |                                   |       |   |        |        |
| 01DEC18-15DEC18, 01JAN19-28JAN19, 12FEB19-30MAR19   | Valid on any CX operating flights | Q     | 3-7 days  | NIL    | NIL    |
|   |                                   | N     |   | 560    | 420    |
|   |                                   | S     |   | 1,470  | 1,110  |
| 01DEC18-15DEC18, 01JAN19-28JAN19, 12FEB19-30MAR19<br>07DEC18-19DEC18, 30DEC18-30JAN19, 10FEB19-30MAR19<br>07DEC18-21DEC18, 27DEC18-01FEB19, 08FEB19-30MAR19<br>07DEC18-21DEC18, 27DEC18-01FEB19, 08FEB19-30MAR19<br>07DEC18-30MAR19 | Valid on any CX operating flights | N     | 3-17 days<br>(extended to 21 days surcharge HKD1000 per person) | 650    | 490    |
|   |                                   | S     |   | 1,560  | 1,170  |
|   |                                   | V     |   | 2,540  | 1,910  |
|   |                                   | L     |   | 3,570  | 2,680  |
|   |                                   | M     |   | 4,720  | 3,540  |
|   |                                   | K     |   | 5,570  | 4,180  |
| <b>Premium Economy Air Fare Surcharge</b>   |                                   |       |   |        |        |
| <b>Ticket must be issued on or before 31 Dec 2018</b>   |                                   |       |   |        |        |
| 07DEC18-19DEC18, 30DEC18-30JAN19, 10FEB19-30MAR19   | Valid on any CX operating flights | E     | 3-7 days  | 2,430  | 1,830  |
| 07DEC18-19DEC18, 30DEC18-30JAN19, 10FEB19-30MAR19<br>20DEC18-21DEC18, 27DEC18-29DEC18, 31JAN19-01FEB19, 08FEB19-09FEB19<br>22DEC18-26DEC18, 02FEB19-07FEB19   | Valid on any CX operating flights | E     | 3-17 days<br>(extended to 21 days surcharge HKD1000 per person) | 3,490  | 2,620  |
|   |                                   |       |   | 5,630  | 4,230  |
|   |                                   |       |   | 8,080  | 6,060  |
| <b>Business Class Air Fare Surcharge</b>  |                                   |       |   |        |        |
| <b>Ticket must be issued on or before 31 Dec 2018</b>   |                                   |       |   |        |        |
| 07DEC18-19DEC18, 30DEC18-30JAN19, 10FEB19-30MAR19   | Valid on any CX operating flights | I     | 3-7 days  | 5,350  | 4,020  |
| 07DEC18-21DEC18, 27DEC18-01FEB19, 08FEB19-30MAR19<br>22DEC18-26DEC18, 02FEB19-07FEB19   | Valid on any CX operating flights | D     | 3-17days  | 8,300  | 6,230  |
|   |                                   |       |   | 15,880 | 11,910 |

**Price Inclusive of:**

- Roundtrip economy class air ticket to Sapporo by Cathay Pacific
- 3 nights hotel accommodations
- Daily breakfast
- 0.15% TIC Levy

**Terms & Conditions:**

- Prices quoted are on per person basis and subject to change without prior notice.
- All payments are non-refundable and non-transferable.
- For payment method, please visit <http://www.jebsenholidays.com/en/Payment-Methods>
- Valid for a minimum of 2 adults travel & check-in together under same booking record for the whole journey.
- Reservations must be made at least 3 working days prior to departure.
- Minimum 2-night consecutive stay at same hotel is required
- Travel must be completed on or before 30 Mar 2019.
- Surcharge may be applied during peak season.
- No amendment, cancellation and refund once booking is confirmed.
- For booking terms & conditions, please visit <http://www.jebsenholidays.com/en/Booking-Terms-and-Conditions>
- Departure taxes, Hong Kong Airport Security Charge, airlines insurance surcharge, airlines fuel surcharge, seasonal surcharge and travel agency service fee are not included in the above fares.
- These amounts will be determined upon your confirmation of booking and will be added to the final fare.
- Prices and conditions are subject to change without prior notice. Jebsen Holidays reserves final decision in case of any disputes.

Last Update: 2 Nov 2018