

# Sapporo

## Green Leaf Niseko

### 4 Days (CX)



# Sapporo Green Leaf Niseko 4 Days

## \$8,390<sub>up</sub>

Valid for Staying: 1 Dec 2018 – 30 Mar 2019

<http://www.thegreenleafhotel.com/en/>

THE  
**GREEN LEAF**  
Niseko Village

Short Haul



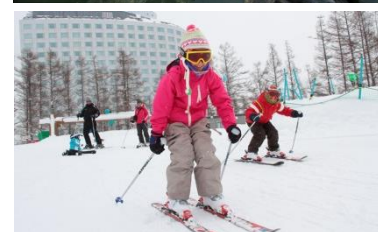
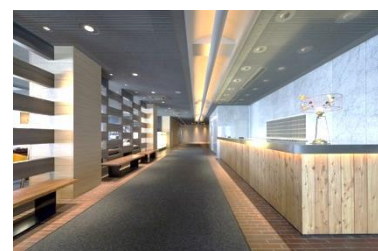
Special rate on travel insurance starting from **HKD60** per person (max. 7 days), please check with our Travel Advisors for more details

### Green Leaf Niseko, Sapporo

Inspired by a fusion of world-class design, local artistry and breathtaking scenery, the 200-room destination hotel provides ski-in ski-out access during winter, tranquil spa and natural onsen facilities and a fantastic variety of bar and dining options featuring local seafood and seasonal Hokkaido produce. Niseko Village is one of Japan's best-kept secrets as an all-season season destination where deep and dry Hokkaido powder blankets the slopes every year; an amazing 18 metres annually.

### Package Inclusive:

- Round trip Economy class ticket to Sapporo by Cathay Pacific
- 3 nights hotel accommodation with daily breakfast
- Complimentary use of indoor and outdoor onsen (including Hilton Niseko Village)
- Complimentary sledding and tubing activities for children and families, inclusive of "Magic Carpets" usage for beginner skiers and snowboarders
- Complimentary scheduled shuttle service between The Green Leaf Niseko Village and Hilton Niseko Village to Hirafu and Kutchan towns



Room Type	Staying Period	Breakfast	Adult		Extension Night/Room/Night	
			Half Twin	Extra Person (sofa bed)	Twin / Double	Extra Person (sofa bed)
Deluxe Room (23m <sup>2</sup> )	1 Dec 2018 – 30 Mar 2019	✓	\$8,390	\$7,650	\$2,120	\$810
			<b>Hotel surcharge: (per room per night)</b> 14-16 Dec 2018, 6-10,14-17,20-24,27-31Jan, 17-21,24-28Feb, 1-9,16,23Mar2019: \$670 17-21Dec2018, 3-5,11,13,18-19,25-26Jan, 1-4,10-16,22-23Feb2019: \$1,180 22-24Dec2018, 2,12Jan,5-7Feb2019: \$2,100 25-29Dec2018, 8-9Feb2019: \$2,510 30Dec2018-1Jan2019: \$3,130			
Suite (46m <sup>2</sup> )	1 Dec 2018 – 30 Mar 2019	✓	\$11,490	\$7,650	\$4,180	\$810
			<b>Hotel surcharge: (per room per night)</b> 14-16 Dec 2018, 6-10,14-17,20-24,27-31Jan, 17-21,24-28Feb, 1-9,16,23Mar2019: \$900 17-21Dec2018, 3-5,11,13,18-19,25-26Jan, 1-4,10-16,22-23Feb2019: \$1,650 22-24Dec2018, 2,12Jan,5-7Feb2019: \$2,520 25-29Dec2018, 8-9Feb2019: \$3,760 30Dec2018-1Jan2019: \$5,750			



**Air Fare Surcharge for High Season**

Date	Applicable Flights	Class	Validity	Adult	Child
<b>Ticket must be issued on or before 31 Oct 2018</b>					
01DEC18-15DEC18, 01JAN19-28JAN19, 12FEB19-30MAR19	Valid on any CX operating flights	Q	3-7 days	NIL	NIL
		N		550	420
		S		1,460	1,100
01DEC18-15DEC18, 01JAN19-28JAN19, 12FEB19-30MAR19 07DEC18-19DEC18, 30DEC18-30JAN19, 10FEB19-30MAR19 07DEC18-21DEC18, 27DEC18-01FEB19, 08FEB19-30MAR19 07DEC18-21DEC18, 27DEC18-01FEB19, 08FEB19-30MAR19 07DEC18-30MAR19	Valid on any CX operating flights	N	3-17 days (extended to 21 days surcharge HKD1000 per person)	640	480
		S		1,540	1,160
		V		2,520	1,890
		L		3,550	2,670
		M		4,680	3,510
		K		5,530	4,150
<b>Premium Economy Air Fare Surcharge</b>					
<b>Ticket must be issued on or before 31 Oct 2018</b>					
07DEC18-19DEC18, 30DEC18-30JAN19, 10FEB19-30MAR19	Valid on any CX operating flights	E	3-7 days	2,430	1,830
07DEC18-19DEC18, 30DEC18-30JAN19, 10FEB19-30MAR19 20DEC18-21DEC18, 27DEC18-29DEC18, 31JAN19-01FEB19, 08FEB19-09FEB19 22DEC18-26DEC18, 02FEB19-07FEB19	Valid on any CX operating flights	E	3-17 days (extended to 21 days surcharge HKD1000 per person)	3,490	2,620
				5,630	4,230
				8,080	6,060
<b>Business Class Air Fare Surcharge</b>					
<b>Ticket must be issued on or before 31 Oct 2018</b>					
07DEC18-19DEC18, 30DEC18-30JAN19, 10FEB19-30MAR19	Valid on any CX operating flights	I	3-7 days	5,350	4,020
07DEC18-21DEC18, 27DEC18-01FEB19, 08FEB19-30MAR19 22DEC18-26DEC18, 02FEB19-07FEB19	Valid on any CX operating flights	D	3-17days	8,300	6,230
				15,880	11,910

**Price Inclusive of:**

- Roundtrip economy class air ticket to Sapporo by Cathay Pacific
- 3 nights hotel accommodations
- Daily breakfast
- 0.15% TIC Levy

**Terms & Conditions:**

- Prices quoted are on per person basis and subject to change without prior notice.
- All payments are non-refundable and non-transferable.
- For payment method, please visit <http://www.jebsenholidays.com/en/Payment-Methods>
- Valid for a minimum of 2 adults travel & check-in together under same booking record for the whole journey.
- Reservations must be made at least 3 working days prior to departure.
- Minimum 2-night consecutive stay at same hotel is required
- Travel must be completed on or before 30 Mar 2019.
- Surcharge may be applied during peak season.
- No amendment, cancellation and refund once booking is confirmed.
- For booking terms & conditions, please visit <http://www.jebsenholidays.com/en/Booking-Terms-and-Conditions>
- Departure taxes, Hong Kong Airport Security Charge, airlines insurance surcharge, airlines fuel surcharge, seasonal surcharge and travel agency service fee are not included in the above fares.
- These amounts will be determined upon your confirmation of booking and will be added to the final fare.
- Prices and conditions are subject to change without prior notice. Jebsen Holidays reserves final decision in case of any disputes.

Last Update: 20 Aug 2018