

Sapporo

Green Leaf Niseko

4 Days (CX)



Sapporo Green Leaf Niseko 4 Days

\$8,390_{up}

Valid for Staying: 1 Dec 2018 – 30 Mar 2019

<http://www.thegreenleafhotel.com/en/>

THE
GREEN LEAF
Niseko Village

Short Haul



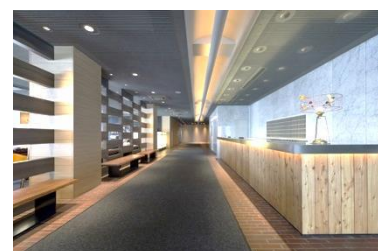
Special rate on travel insurance starting from **HKD60** per person (max. 7 days), please check with our Travel Advisors for more details

Green Leaf Niseko, Sapporo

Inspired by a fusion of world-class design, local artistry and breathtaking scenery, the 200-room destination hotel provides ski-in ski-out access during winter, tranquil spa and natural onsen facilities and a fantastic variety of bar and dining options featuring local seafood and seasonal Hokkaido produce. Niseko Village is one of Japan's best-kept secrets as an all-season season destination where deep and dry Hokkaido powder blankets the slopes every year; an amazing 18 metres annually.

Package Inclusive:

- Round trip Economy class ticket to Sapporo by Cathay Pacific
- 3 nights hotel accommodation with daily breakfast
- Complimentary use of indoor and outdoor onsen (including Hilton Niseko Village)
- Complimentary sledding and tubing activities for children and families, inclusive of "Magic Carpets" usage for beginner skiers and snowboarders
- Complimentary scheduled shuttle service between The Green Leaf Niseko Village and Hilton Niseko Village to Hirafu and Kutchan towns



Room Type	Staying Period	Breakfast	Adult		Extension Night/Room/Night	
			Half Twin	Extra Person (sofa bed)	Twin / Double	Extra Person (sofa bed)
Deluxe Room (23m ²)	1 Dec 2018 – 30 Mar 2019	✓	\$8,390	\$7,650	\$2,120	\$810
			Hotel surcharge: (per room per night) 14-16 Dec 2018, 6-10,14-17,20-24,27-31Jan, 17-21,24-28Feb, 1-9,16,23Mar2019: \$670 17-21Dec2018, 3-5,11,13,18-19,25-26Jan, 1-4,10-16,22-23Feb2019: \$1,180 22-24Dec2018, 2,12Jan,5-7Feb2019: \$2,100 25-29Jan2018, 8-9Feb2019: \$2,510 30Dec2018-1Jan2019: \$3,130			
Suite (46m ²)	1 Dec 2018 – 30 Mar 2019	✓	\$11,490	\$7,650	\$4,180	\$810
			Hotel surcharge: (per room per night) 14-16 Dec 2018, 6-10,14-17,20-24,27-31Jan, 17-21,24-28Feb, 1-9,16,23Mar2019: \$900 17-21Dec2018, 3-5,11,13,18-19,25-26Jan, 1-4,10-16,22-23Feb2019: \$1,650 22-24Dec2018, 2,12Jan,5-7Feb2019: \$2,520 25-29Jan2018, 8-9Feb2019: \$3,760 30Dec2018-1Jan2019: \$5,750			



Air Fare Surcharge for High Season

Date	Applicable Flights	Class	Validity	Adult	Child
Ticket must be issued on or before 31 Oct 2018					
01DEC18-15DEC18, 01JAN19-28JAN19, 12FEB19-30MAR19	Valid on any CX operating flights	Q	3-7 days	NIL	NIL
		N		550	420
		S		1,460	1,100
01DEC18-15DEC18, 01JAN19-28JAN19, 12FEB19-30MAR19 07DEC18-19DEC18, 30DEC18-30JAN19, 10FEB19-30MAR19 07DEC18-21DEC18, 27DEC18-01FEB19, 08FEB19-30MAR19 07DEC18-21DEC18, 27DEC18-01FEB19, 08FEB19-30MAR19 07DEC18-30MAR19	Valid on any CX operating flights	N	3-17 days (extended to 21 days surcharge HKD1000 per person)	640	480
		S		1,540	1,160
		V		2,520	1,890
		L		3,550	2,670
		M		4,680	3,510
		K		5,530	4,150
Premium Economy Air Fare Surcharge					
Ticket must be issued on or before 31 Oct 2018					
07DEC18-19DEC18, 30DEC18-30JAN19, 10FEB19-30MAR19	Valid on any CX operating flights	E	3-7 days	2,430	1,830
07DEC18-19DEC18, 30DEC18-30JAN19, 10FEB19-30MAR19 20DEC18-21DEC18, 27DEC18-29DEC18, 31JAN19-01FEB19, 08FEB19-09FEB19 22DEC18-26DEC18, 02FEB19-07FEB19	Valid on any CX operating flights	E	3-17 days (extended to 21 days surcharge HKD1000 per person)	3,490	2,620
				5,630	4,230
				8,080	6,060
Business Class Air Fare Surcharge					
Ticket must be issued on or before 31 Oct 2018					
07DEC18-19DEC18, 30DEC18-30JAN19, 10FEB19-30MAR19	Valid on any CX operating flights	I	3-7 days	5,350	4,020
07DEC18-21DEC18, 27DEC18-01FEB19, 08FEB19-30MAR19 22DEC18-26DEC18, 02FEB19-07FEB19	Valid on any CX operating flights	D	3-17days	8,300	6,230
				15,880	11,910

Price Inclusive of:

- Roundtrip economy class air ticket to Sapporo by Cathay Pacific
- 3 nights hotel accommodations
- Daily breakfast
- 0.15% TIC Levy

Terms & Conditions:

- Prices quoted are on per person basis and subject to change without prior notice.
- All payments are non-refundable and non-transferable.
- For payment method, please visit <http://www.jebsenholidays.com/en/Payment-Methods>
- Valid for a minimum of 2 adults travel & check-in together under same booking record for the whole journey.
- Reservations must be made at least 3 working days prior to departure.
- Minimum 2-night consecutive stay at same hotel is required
- Travel must be completed on or before 30 Mar 2019.
- Surcharge may be applied during peak season.
- No amendment, cancellation and refund once booking is confirmed.
- For booking terms & conditions, please visit <http://www.jebsenholidays.com/en/Booking-Terms-and-Conditions>
- Departure taxes, Hong Kong Airport Security Charge, airlines insurance surcharge, airlines fuel surcharge, seasonal surcharge and travel agency service fee are not included in the above fares.
- These amounts will be determined upon your confirmation of booking and will be added to the final fare.
- Prices and conditions are subject to change without prior notice. Jebsen Holidays reserves final decision in case of any disputes.

Last Update: 17 Jul 2018